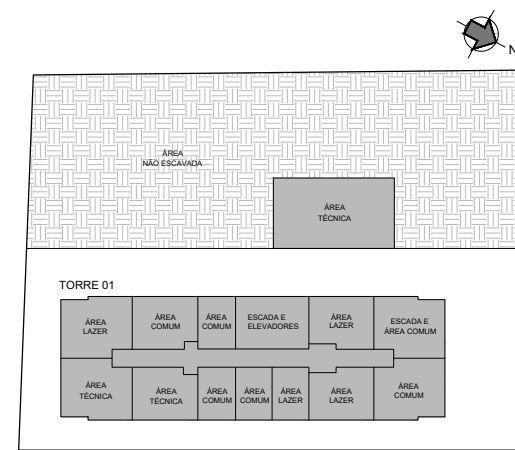




METROCASA
VILA DOS
× REMÉDIOS



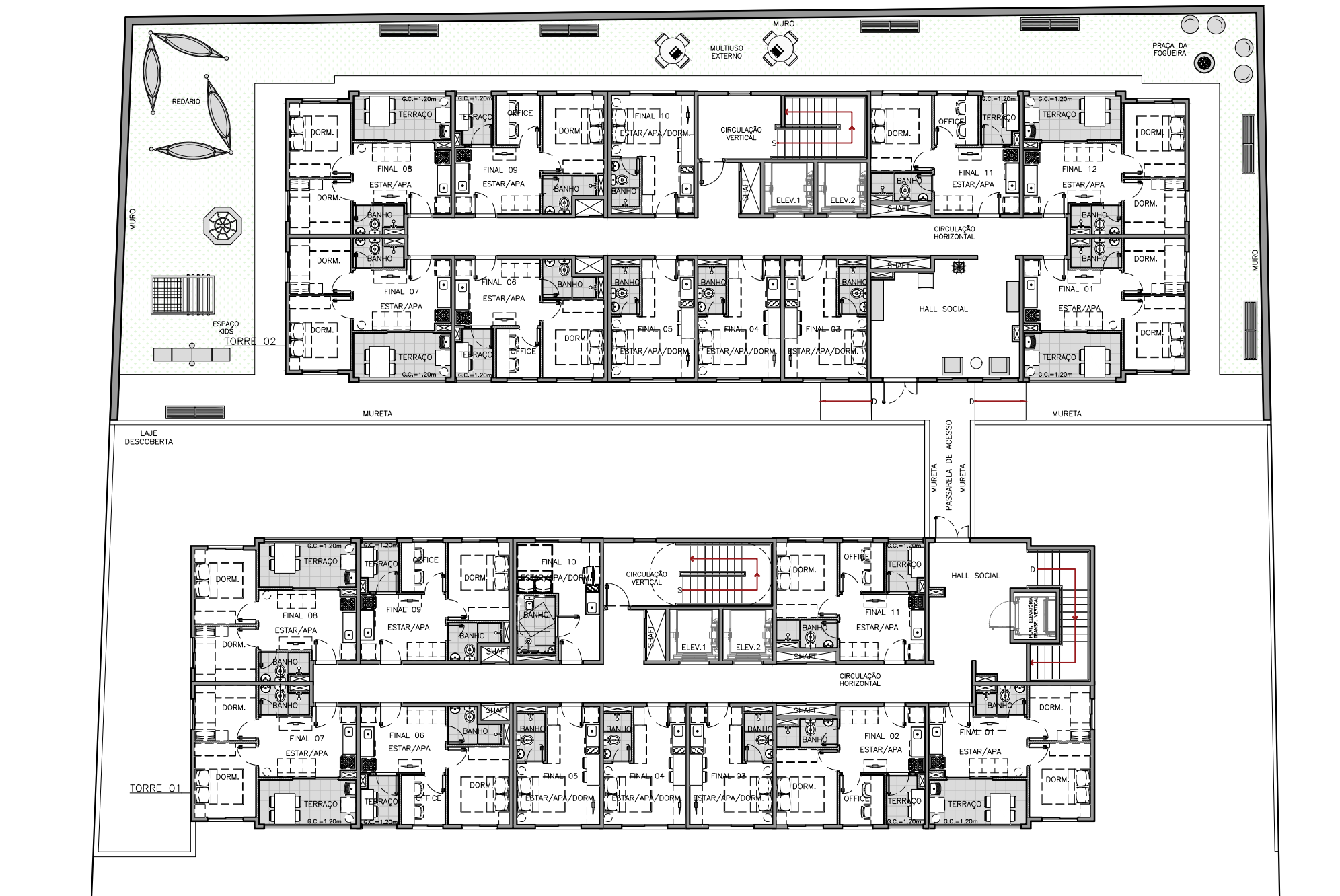
EMBASAMENTO



RUA CONSELHEIRO AMARAL

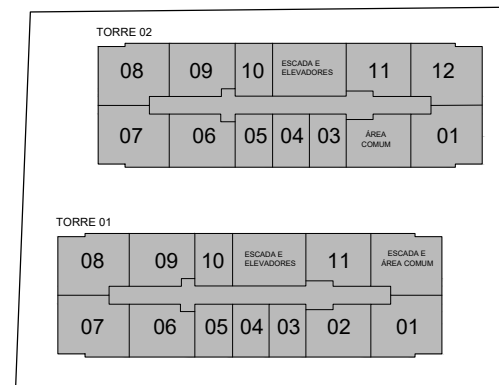
EMPREENDIMENTO:

metrocasa
Vila dos Remédios



PASSEIO PÚBLICO
VIA

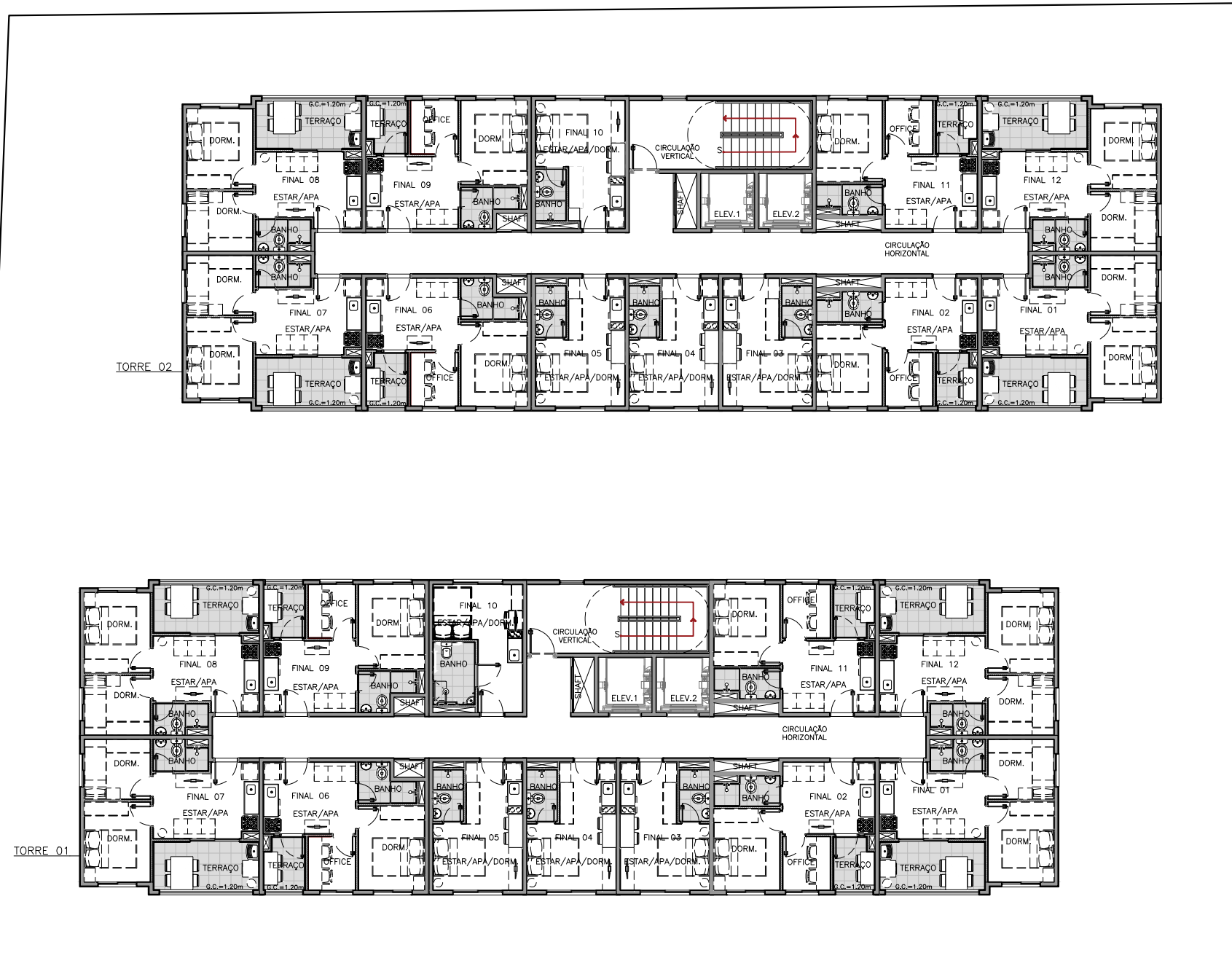
PAVIMENTO TÉRREO



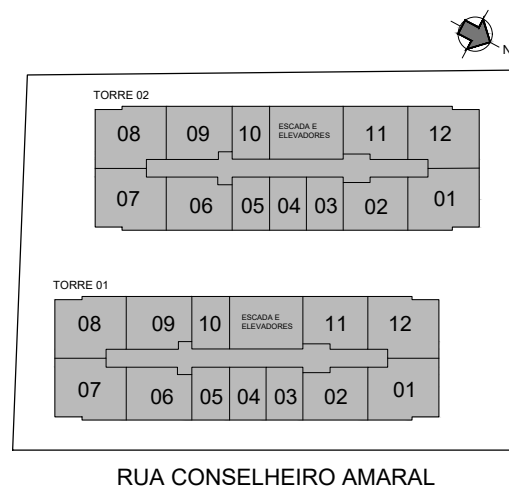
RUA CONSELHEIRO AMARAL

EMPREENDIMENTO:

metrocasa
Vila dos Remédios

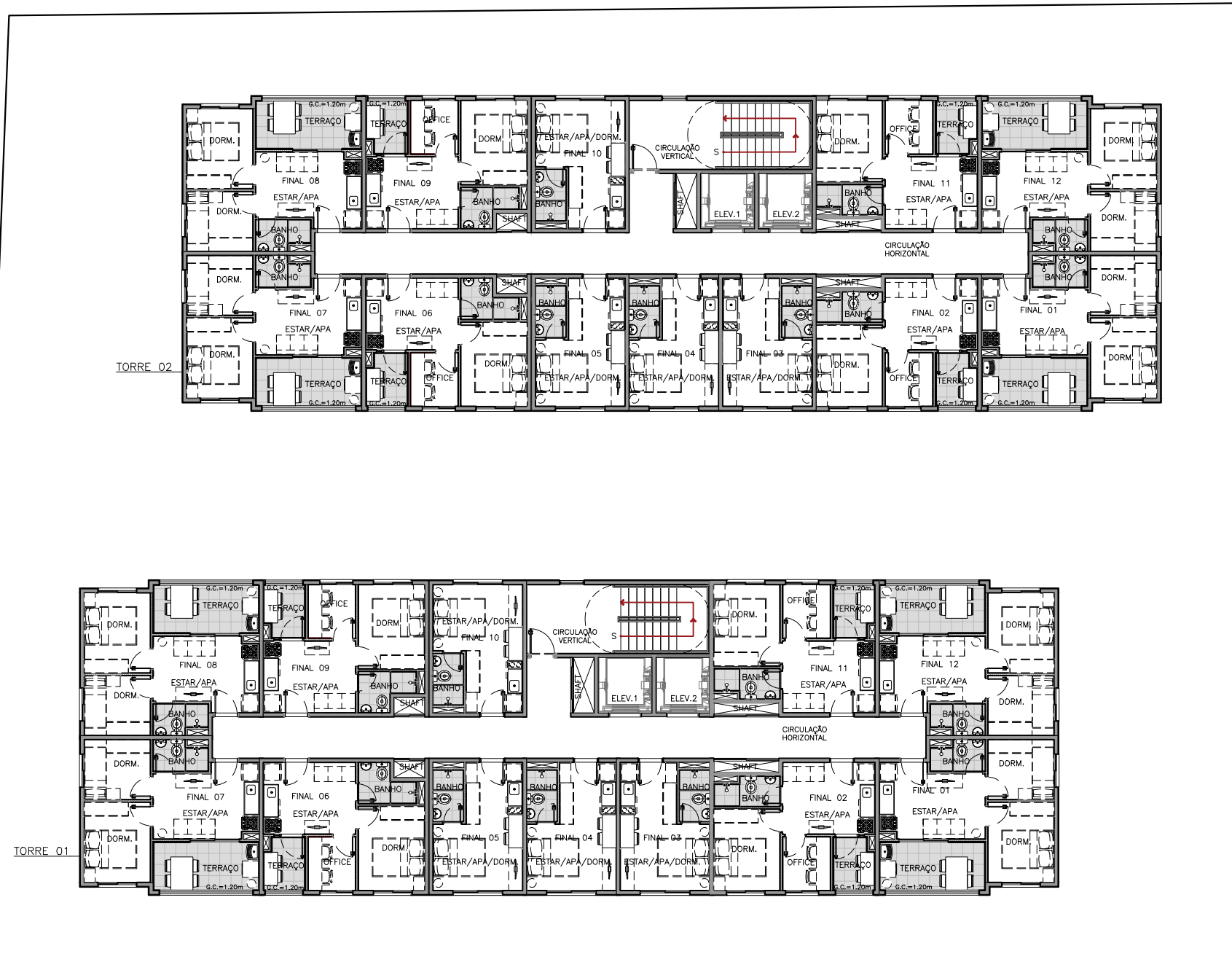


PASSEIO PÚBLICO
VIA
1º AO 4º PAVIMENTO

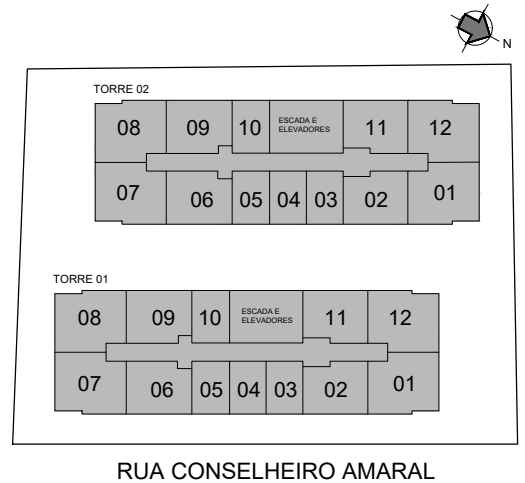


EMPREENDIMENTO:



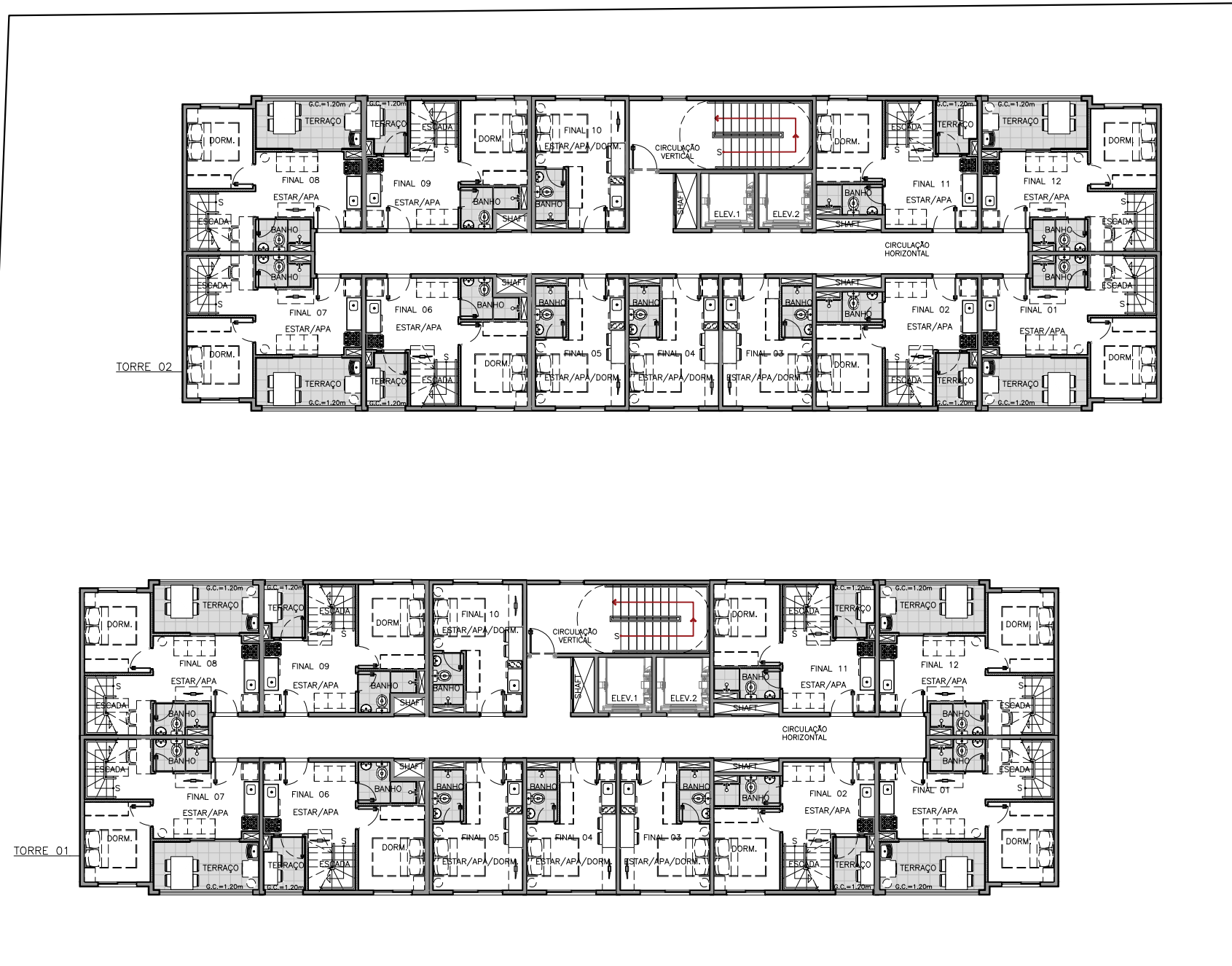


PASSEIO PÚBLICO
VIA
5º AO 8º PAVIMENTO

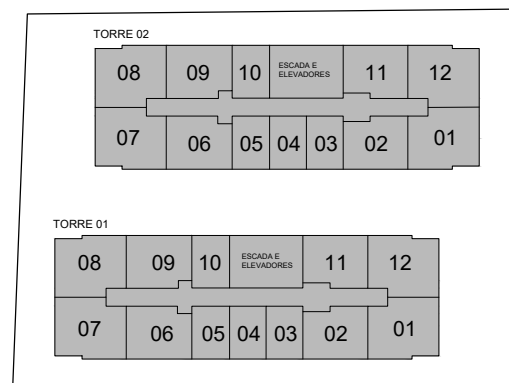


EMPREENDIMENTO:





PASSEIO PÚBLICO
VIA
9º PAVIMENTO

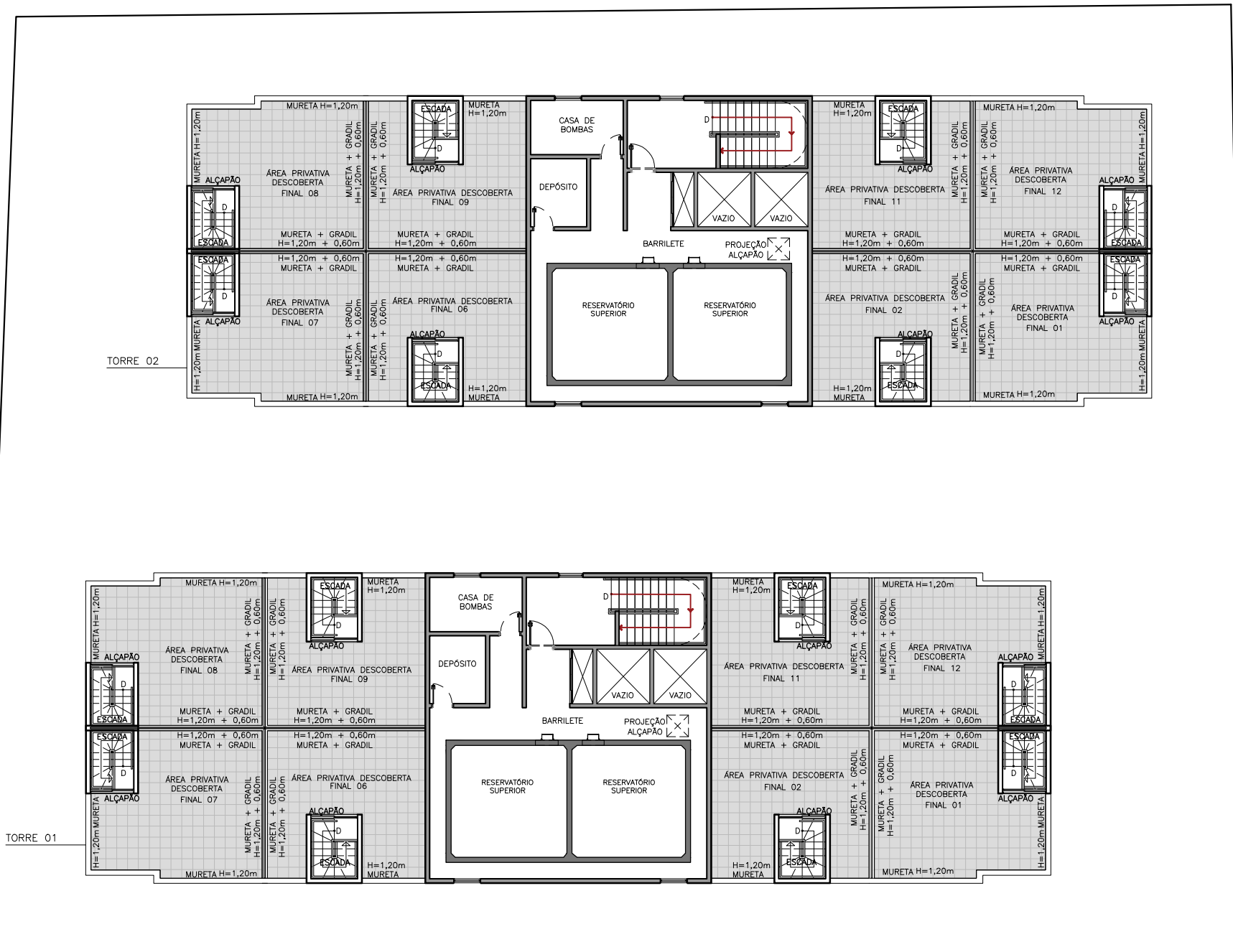


RUA CONSELHEIRO AMARAL



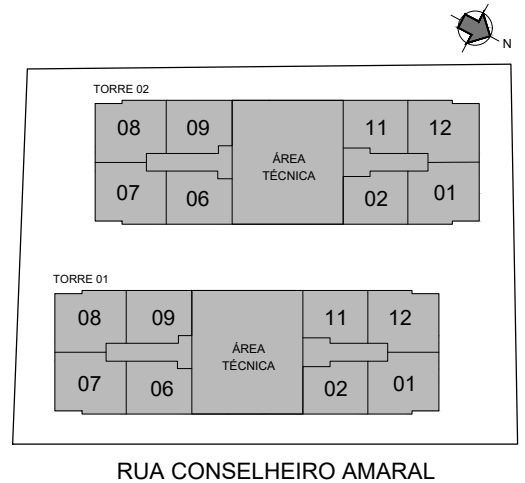
EMPREENDIMENTO:





PASSEIO PÚBLICO
VIA

COBERTURA E ÁTICO



EMPREENDIMENTO:

