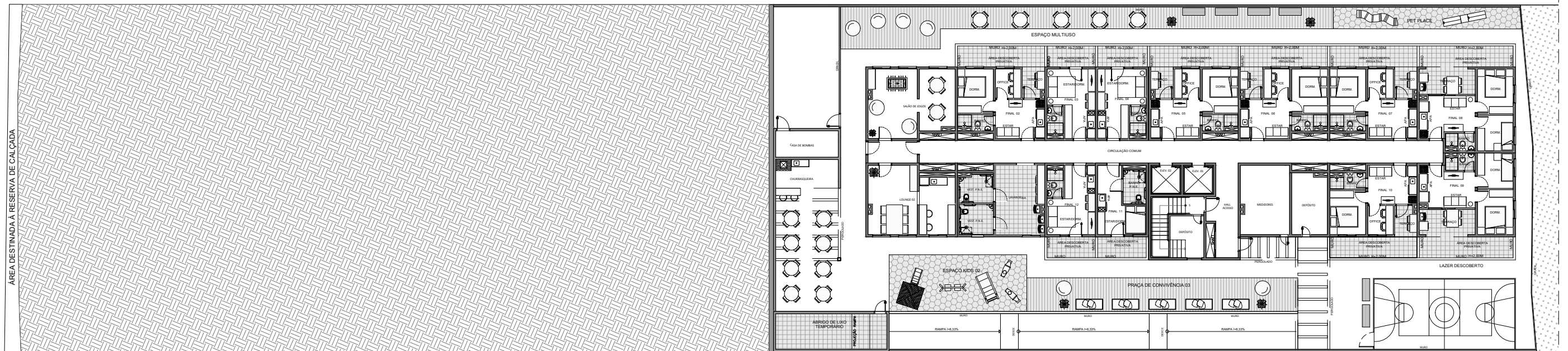


metrocasas
Jaraguá

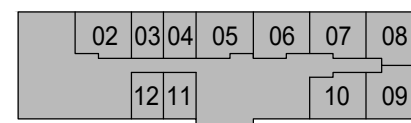
AVENIDA JORNALISTA PAULO ZINGG



2º PAVIMENTO INFERIOR



AVENIDA JORNALISTA PAULO ZINGG

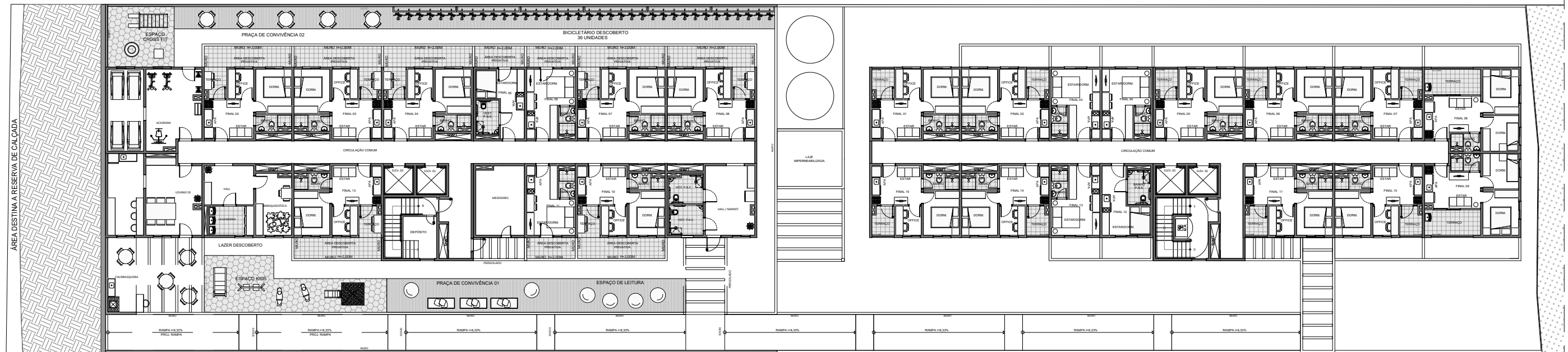


TORRE 2

EMPREENDIMENTO:



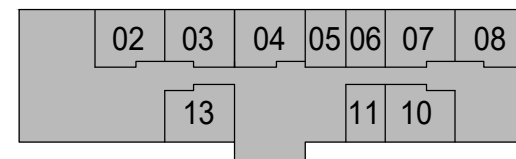
AVENIDA JORNALISTA PAULO ZINGG



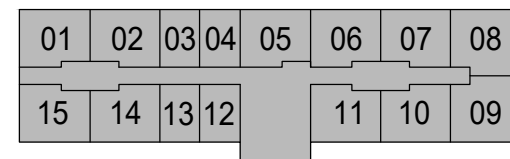
1º PAVIMENTO INFERIOR



AVENIDA JORNALISTA PAULO ZINGG



TORRE 1

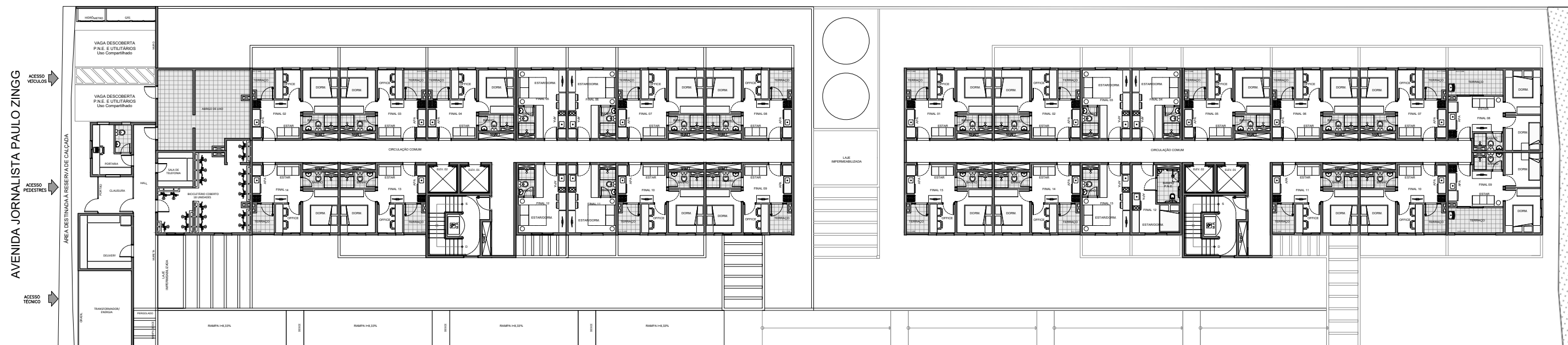


TORRE 2



EMPREENDIMENTO:

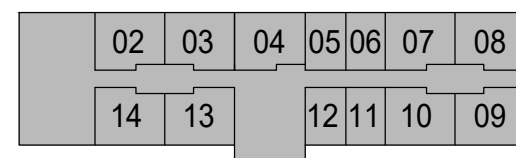




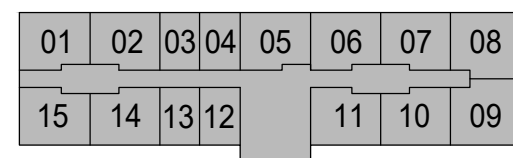
PAVIMENTO TÉRREO



AVENIDA JORNALISTA PAULO ZINGG



TORRE 1



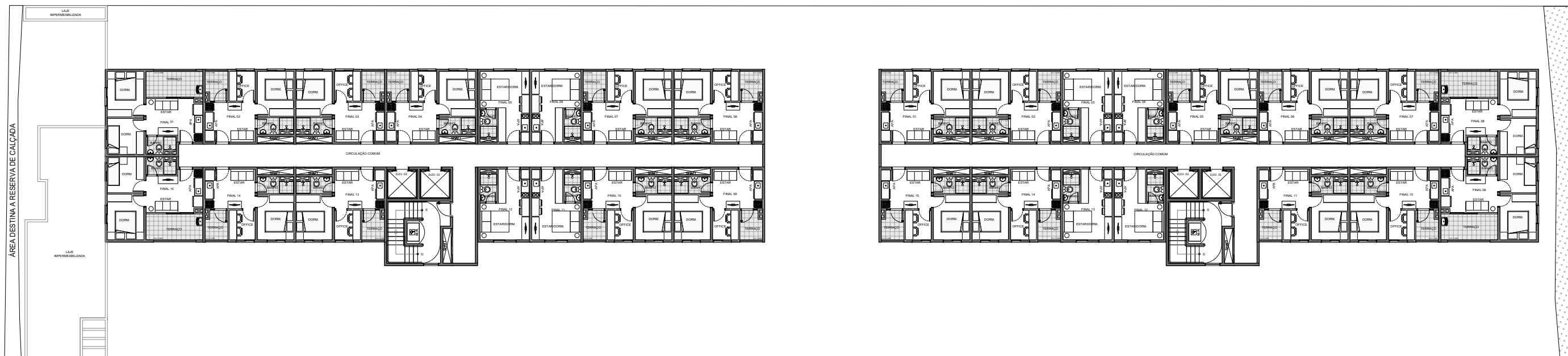
TORRE 2



EMPREENDIMENTO:



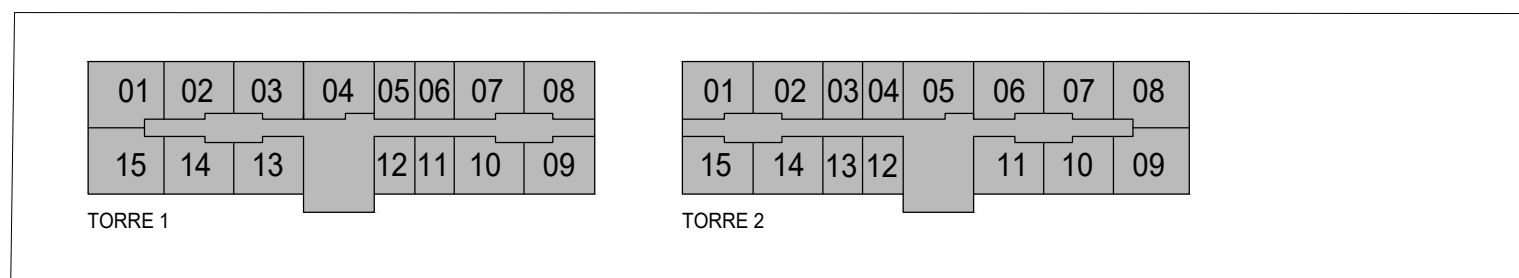
AVENIDA JORNALISTA PAULO ZINGG



TIPO (1º AO 12º PAVIMENTO)



AVENIDA JORNALISTA PAULO ZINGG

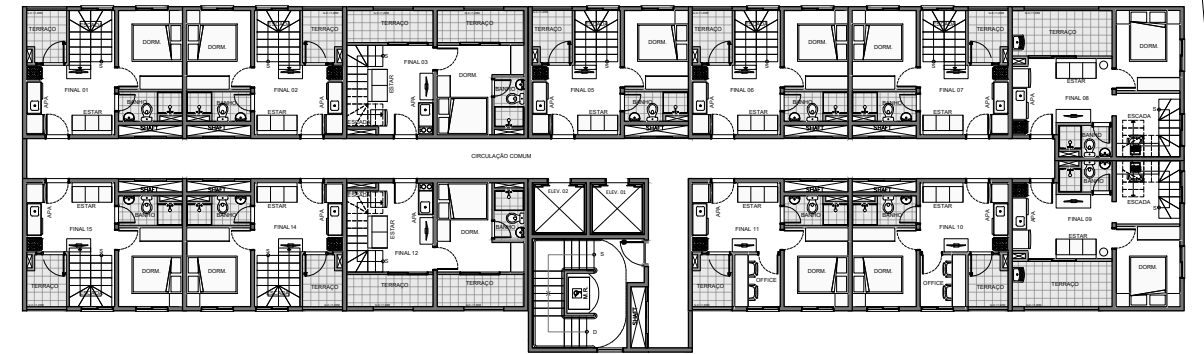
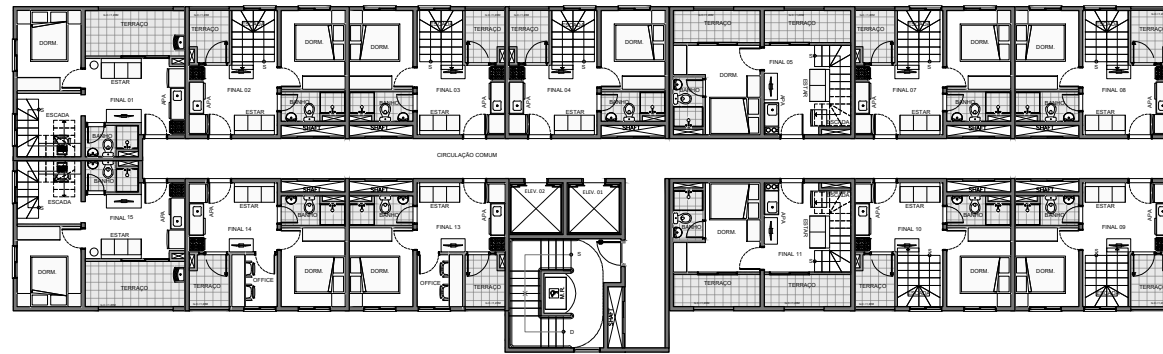


EMPREENDIMENTO:



AVENIDA JORNALISTA PAULO ZINGG

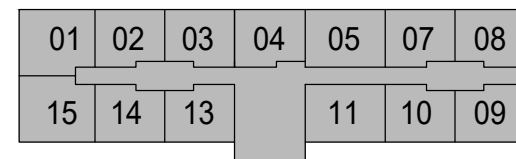
ÁREA DESTINADA À RESERVA DE CALÇADA



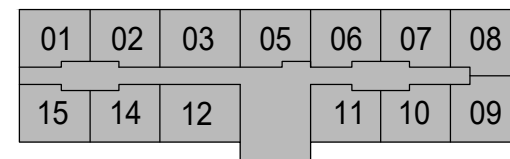
13º PAVIMENTO (DUPLEX INFERIOR)



AVENIDA JORNALISTA PAULO ZINGG



TORRE 1



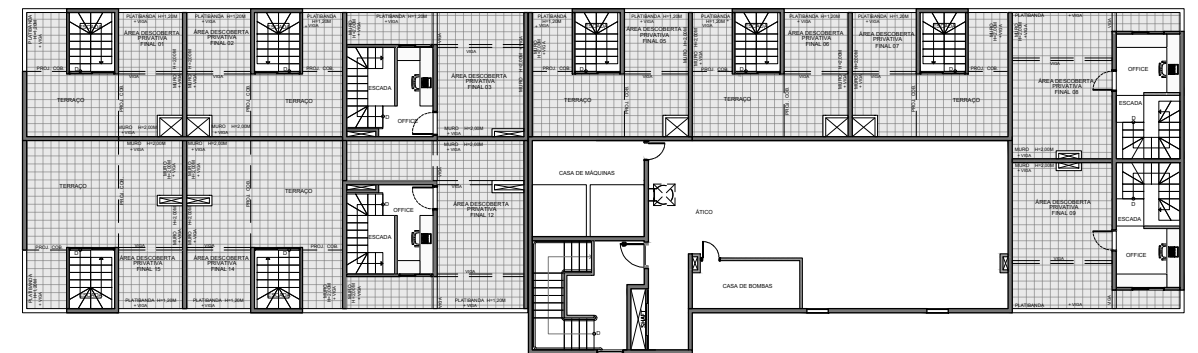
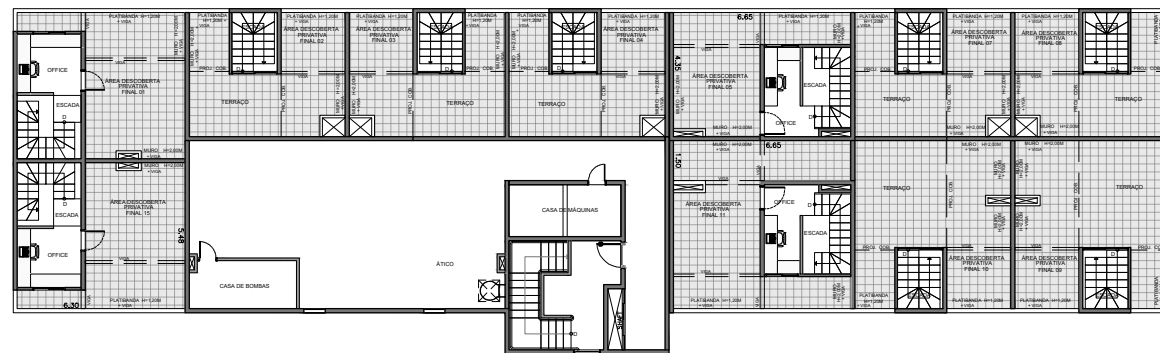
TORRE 2



EMPREENDIMENTO:



AVENIDA JORNALISTA PAULO ZINGG



COBERTURA (DUPLEX SUPERIOR)



AVENIDA JORNALISTA PAULO ZINGG

| | | | | | | |
|----|----|----|----|----|----|----|
| 01 | 02 | 03 | 04 | 05 | 07 | 08 |
| 15 | | | | 11 | 10 | 09 |

TORRE 1

| | | | | | | |
|----|----|----|----|----|----|----|
| 01 | 02 | 03 | 05 | 06 | 07 | 08 |
| 15 | 14 | 12 | | | | 09 |

TORRE 2



EMPREENDIMENTO:

